

**Caratteristiche:**

Diffusori circolari a geometria fissa ed effetto elicoidale su pannello con schermo in lamiera forata.

Costruzione:

Schermo forellato in acciaio verniciato bianco RAL 9010. Diffusore circolare nero RAL 9005.

Impiego:

A soffitto in mandata e ripresa. Altezza di installazione. 2,8 – 3,2 m

Fissaggio:

Fissaggio mediante viti sul collo del diffusore.

Accessori:

- Plenum di raccordo in acciaio zincato con isolamento e serranda di taratura.

Characteristics:

Fixed geometry circular diffuser with helical effect on perforated panel.

Construction:

Perforated plate white RAL 9010. Swirl diffuser black RAL 9005.

Utilization:

Ceiling installation for air supply or return. Installation height: 2,8 – 3,2 m.


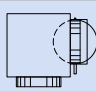
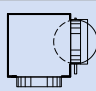
Fixing:

Fixing by screws on neck diffuser.

Accessories:

- Galvanized steel connecting plenum with insulation and calibration damper.

PREZZI / PRICES

						
	DEE-SP	DEE-SP-R	PDC	PDCI	Serranda per Plenum Damper for Plenum	Equalizzatore per Plenum Equalizer for Plenum
Ø mm	€	€	€	€	€	€
100	-	-	-	-	-	-
125	-	-	-	-	-	-
160	-	-	-	-	-	-
200	-	-	-	-	-	-
250	-	-	-	-	-	-
315	-	-	-	-	-	-
400	-	-	-	-	-	-
500	-	-	-	-	-	-

DESCRIZIONI:

DEE-SP: Diffusore circolare ad effetto elicoidale su pannello forellato fisso 595x595 mm

DEE-SP-R: Diffusore circolare ad effetto elicoidale su pannello forellato smontabile 595x595 mm

DESCRIPTION:

DEE-SP: Swirl diffuser on perforated panel 595x595 mm

DEE-SP-R: Swirl diffuser on removable perforated panel 595x595 mm

MISURE / MEASURES

Dimensioni nominali Ø mm Nominal dimensions Ø mm	DEE-SP		PLENUM PDC mm		
	ØB	H	AxA	ØD	ØE
100	98	150	200x200	96	102
125	123	150	200x200	96	127
160	158	150	250x250	156	162
200	198	150	300x300	156	202
250	248	150	350x350	196	252
315	313	170	400x400	246	317
400	398	200	500x500	311	402
500	498	150	600x600	396	503

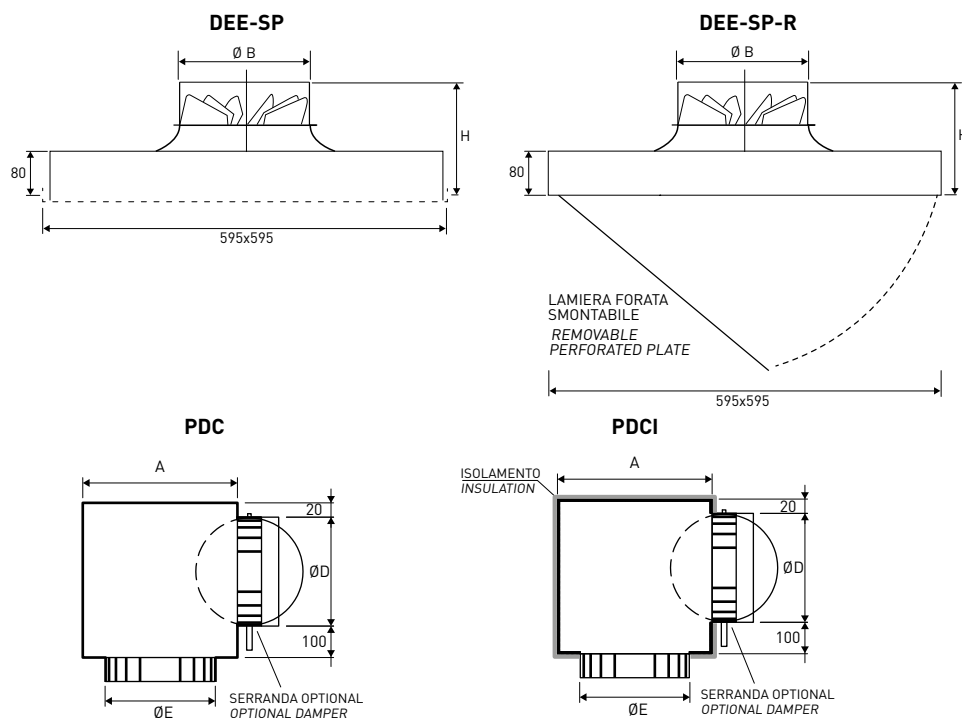
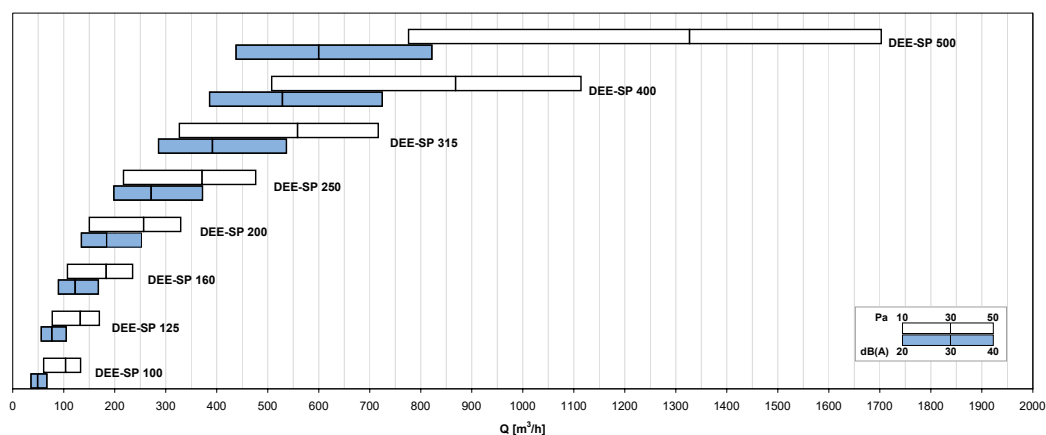
DISEGNI / DRAWINGS

DIAGRAMMA SCELTA RAPIDA / QUICK SELECTION DIAGRAM

TABELLA DI SELEZIONE / SELECTION TABLE

Modello Model	A_v [m²]	Q [m³/h]		L_{WA} [dB(A)]		$X_{(0,25)}$ [m]		Dp_t^* [Pa]	
		min	max	min	max	min	max	min	max
DEE-SP 100	0,01550	60	130	36	61	0,92	1,54	10	50
DEE-SP 125	0,01978	80	170	31	55	1,03	1,71	10	50
DEE-SP 160	0,02737	110	240	27	51	1,14	1,94	10	50
DEE-SP 200	0,03833	150	330	23	48	1,26	2,15	10	50
DEE-SP 250	0,05545	220	480	23	48	1,44	2,44	10	50
DEE-SP 315	0,08341	330	720	25	49	1,66	2,81	10	50
DEE-SP 400	0,12966	510	1110	29	54	1,94	3,28	10	50
DEE-SP 500	0,19816	780	1700	38	63	2,28	3,86	10	50

* con serranda / with damper

DISEGNI / DRAWINGS
