

**Caratteristiche:**

Diffusori circolari a cono fissi con corpo centrale asportabile e serranda a farfalla.

**Costruzione:**

Alluminio verniciato bianco RAL 9016 e guarnizione di tenuta.

**Impiego:**

A soffitto, in mandata e ripresa. Altezza di installazione: 2,6 – 4,1 m

**Fissaggio:**

Fissaggio a viti nascoste posizionate sul collo del diffusore o con ponte di montaggio.

**Accessori:** Collare di fissaggio.

**Characteristics:**

Circular diffusers with fixed cones and removable core and butterfly damper.

**Construction:**

White RAL 9016 painted aluminium and airtight seal.

**Utilization:**

For ceiling installation and for air intake and delivery. Installation height: 2,6 – 4,1 m.

**Fixing:**

Fixing by concealed fixing screws mounted on the diffuser neck or with mounting bridge.

**Accessories:** Fixing ring.

**PREZZI / PRICES**

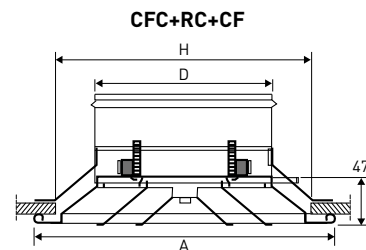
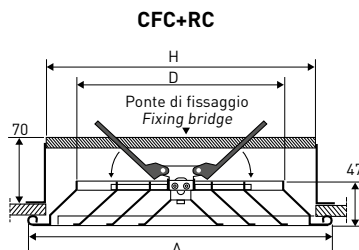
	<b>CFC+RC</b>		<b>CF</b> Coll. di fiss. / Fixing ring	
Ø [mm]	€		€	
* 150			-	
* 200			-	
* 250			-	
* 300			-	
* 350			-	

Nota: nel prezzo è incluso il ponte di fissaggio

Note: on the price is included the fixing bridge.

**MISURE / MEASURES**

Dimensioni mm / Dimensions mm	H	D	A
150	220	148	257
200	271	198	309
250	324	249	362
300	377	298	415
350	411	348	460

**DISEGNI / DRAWINGS****CF**

Collarino di fissaggio  
Fixing ring

Ø 150

Ø 200

Ø 250



Polycarbonato  
Polycarbonate

**CF**

Collarino di fissaggio  
Fixing ring


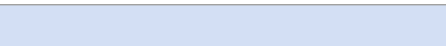

Ø 300

Ø 350



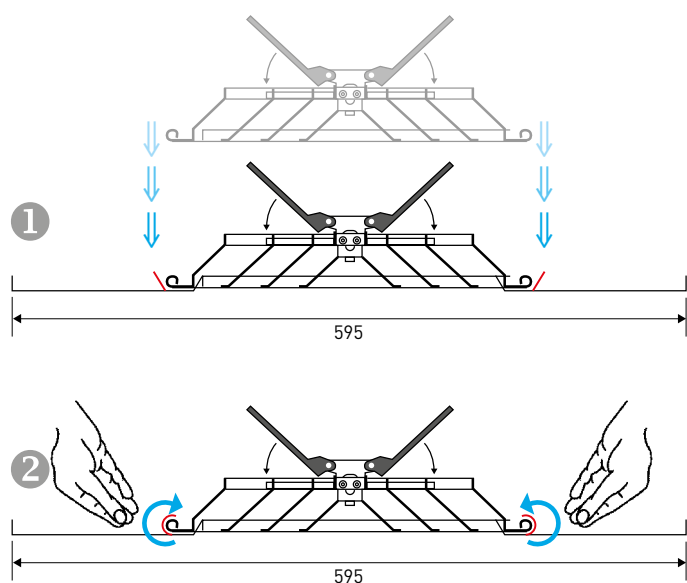
Acciaio  
Steel

## PREZZI / PRICES

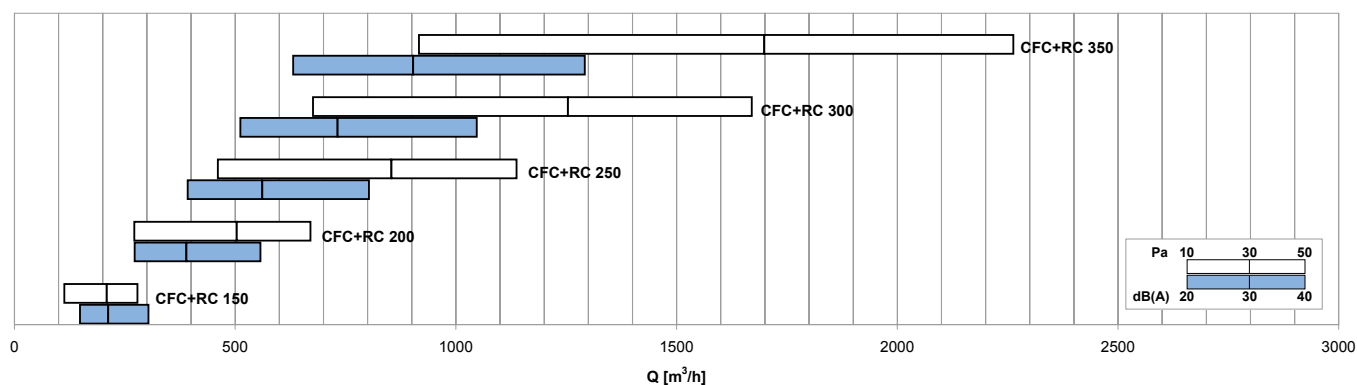
				
	Portata aria m³/h Airflow m³/h		CFP	
Ø [mm]	Min.	Max	€	PEZZI PIECES
* 150	100	300	-	10
* 200	150	500	-	10
* 250	200	900	-	10



## MONTAGGIO / MOUNTING



## DIAGRAMMA SCELTA RAPIDA / QUICK SELECTION DIAGRAM



## TABELLA DI SELEZIONE / SELECTION TABLE

Modello Model	$A_v$ [m²]	Q [m³/h]		$L_{wa}$ [dB(A)]		$X_{(0,25)} - Y_{(0,25)}$ [m]		$\Delta p_t$ [Pa]	
		min	max	min	max	min	max	min	max
<b>CFC+RC 150</b>	0,0102	110	280	-	38	1,0	2,1	10	50
<b>CFC+RC 200</b>	0,0227	270	670	-	45	1,5	3,2	10	50
<b>CFC+RC 250</b>	0,0366	460	1140	24	50	1,9	4,2	10	50
<b>CFC+RC 300</b>	0,0519	680	1670	28	53	2,2	5,1	10	50
<b>CFC+RC 350</b>	0,0684	920	2260	31	56	2,6	6,0	10	50